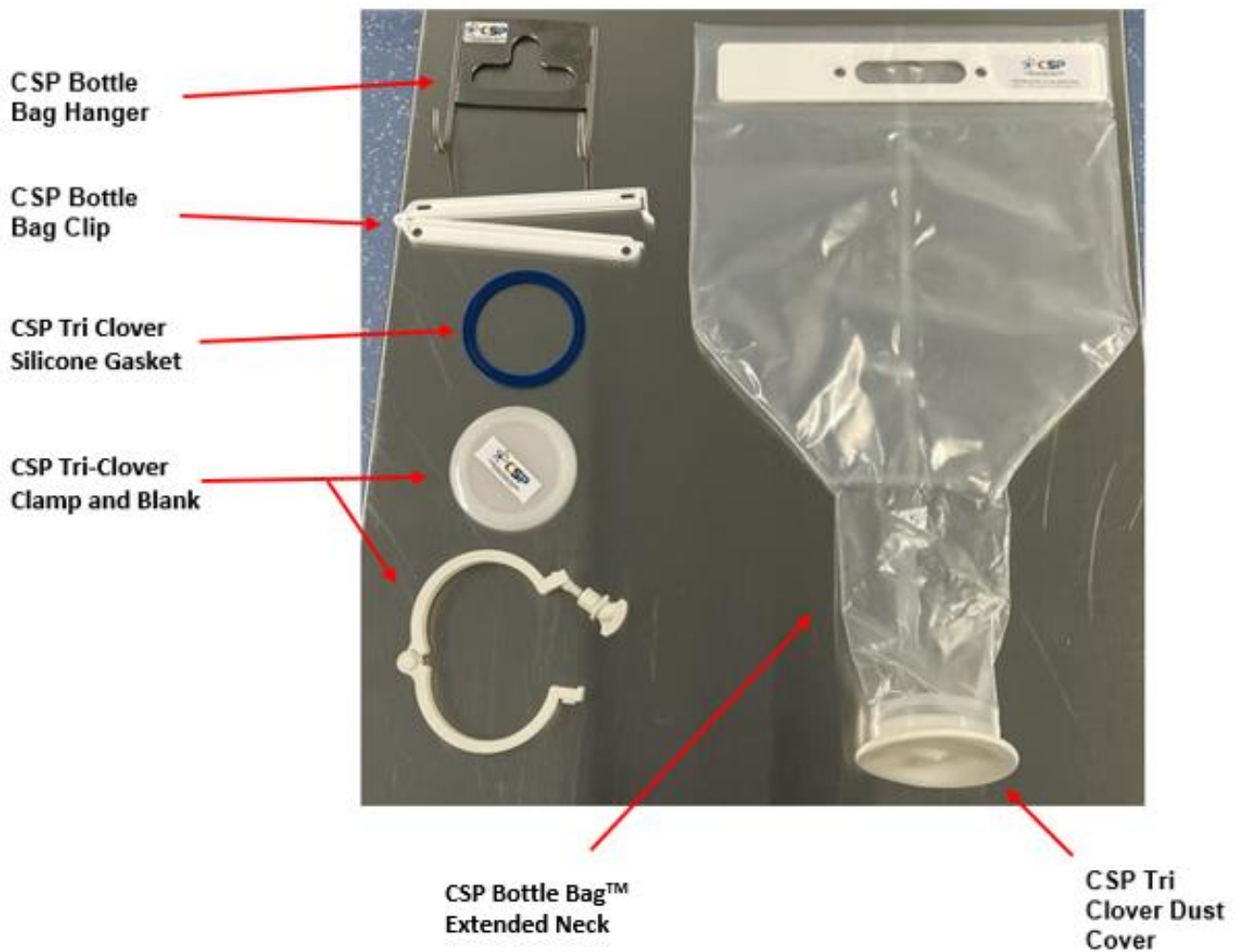


Ordering Information

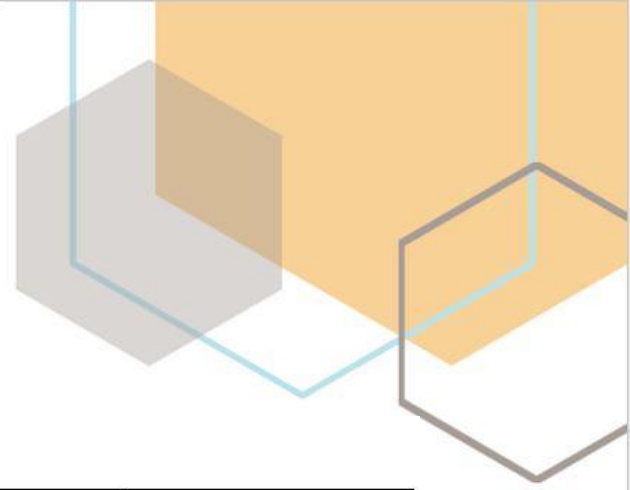
The order information listed below is for the **extended neck version** of the CSP Bottle Bag™. This version was designed to be used without the aid of a split butterfly valve or similar equipment. We offer the CSP Bottle Bag™ with ferrule connections 3", 4" and 6" of standard BS4825-3, other size connections available on request. Other volumes outside the standard listed below are available on request. The bag can be filled, the long neck can be folded and clamped to form a seal, and the remaining extended neck allows the ferrule to be connected to a vessel without interfering with the seal.





CSP

Containment Service Providers
All your flexible containment solutions



Bottle Bag Extended Neck – 2D Pinch Welded

Liner Volume (Litres)	Ferrule Size	Part Number	Description
5	3"	CSP7004-00-00	Extended Neck, Pinch Welded Body
10	3"	CSP7004-01-00	Extended Neck, Pinch Welded Body
15	3"	CSP7004-02-00	Extended Neck, Pinch Welded Body
25	3"	CSP7004-03-00	Extended Neck, Pinch Welded Body
50L	3"	CSP7004-04-00	Extended Neck, Pinch Welded Body

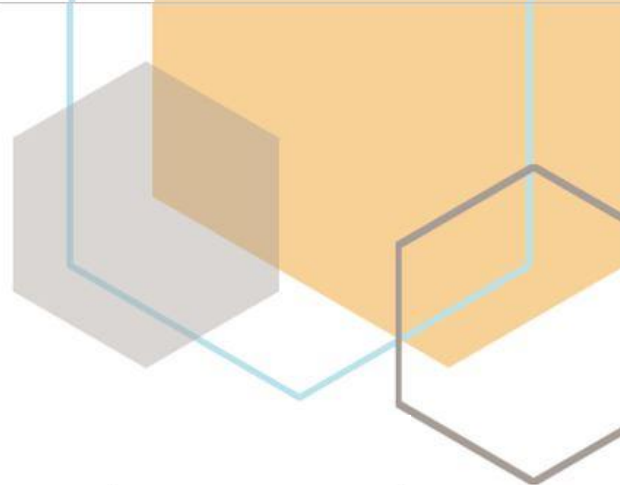
Bottle Bag Extended Neck – 3D Lap Welded

Volume (Litres)	Ferrule Size	Part Number	Description
5	3"	CSP7005-00-00	Extended Neck, Lap Welded Body
10	3"	CSP7005-01-00	Extended Neck, Lap Welded Body
15	3"	CSP7005-02-00	Extended Neck, Lap Welded Body
25	3"	CSP7005-03-00	Extended Neck, Lap Welded Body
50L	3"	CSP7005-04-00	Extended Neck, Lap Welded Body



CSP

Containment Service Providers
All your flexible containment solutions



Bottle Bag Extended Neck – 2D Pinch Welded

Liner Volume (Litres)	Ferrule Size	Part Number	Description
5	4"	CSP7000-00-00	Extended Neck, Pinch Welded Body
10	4"	CSP7000-01-00	Extended Neck, Pinch Welded Body
15	4"	CSP7000-02-00	Extended Neck, Pinch Welded Body
25	4"	CSP7000-03-00	Extended Neck, Pinch Welded Body
50L	4"	CSP7000-04-00	Extended Neck, Pinch Welded Body

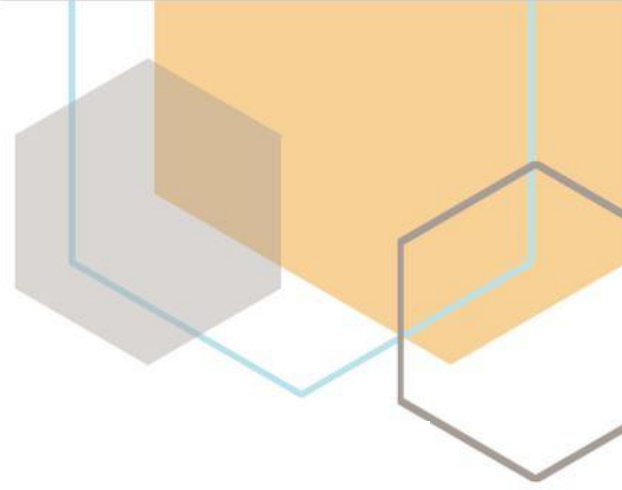
Bottle Bag Extended Neck – 3D Lap Welded

Volume (Litres)	Ferrule Size	Part Number	Description
5	4"	CSP7001-00-00	Extended Neck, Lap Welded Body
10	4"	CSP7001-01-00	Extended Neck, Lap Welded Body
15	4"	CSP7001-02-00	Extended Neck, Lap Welded Body
25	4"	CSP7001-03-00	Extended Neck, Lap Welded Body
50L	4"	CSP7001-04-00	Extended Neck, Lap Welded Body



CSP

Containment Service Providers
All your flexible containment solutions



Bottle Bag Extended Neck – 2D Pinch Welded

Liner Volume (Litres)	Ferrule Size	Part Number	Description
5	6"	CSP7002-00-00	Extended Neck, Pinch Welded Body
10	6"	CSP7002-01-00	Extended Neck, Pinch Welded Body
15	6"	CSP7002-02-00	Extended Neck, Pinch Welded Body
25	6"	CSP7002-03-00	Extended Neck, Pinch Welded Body
50L	6"	CSP7002-04-00	Extended Neck, Pinch Welded Body

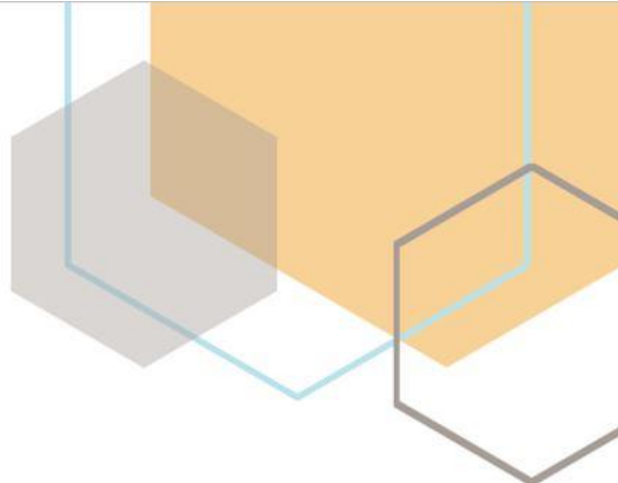
Bottle Bag Extended Neck – 3D Lap Welded

Volume (Litres)	Ferrule Size	Part Number	Description
5	6"	CSP7003-00-00	Extended Neck, Lap Welded Body
10	6"	CSP7003-01-00	Extended Neck, Lap Welded Body
15	6"	CSP7003-02-00	Extended Neck, Lap Welded Body
25	6"	CSP7003-03-00	Extended Neck, Lap Welded Body
50L	6"	CSP7003-04-00	Extended Neck, Lap Welded Body



CSP

Containment Service Providers
All your flexible containment solutions



Optional Accessories to Support Process Operation

Part Number	Accessory	Description
CSP3373-00-00	CSP Bottle Bag Hanger	316 stainless steel lifting hanger with an SWL of 80Kg
CSP3373-01-00	CSP Bottle Bag Clip	Plastic clip used to close the neck of the bag
CSP3373-02-00	CSP Tri Clover Blank Cap 3"	Plastic cover used to close the ferrule
CSP3373-03-00	CSP Tri Clover Blank Cap 4"	Plastic cover used to close the ferrule
CSP3373-04-00	CSP Tri Clover Blank Cap 6"	Plastic cover used to close the ferrule
CSP3373-05-00	CSP Tri Clover Clamp 3"	Used to connect the bag to the vessel and/or connect the blank cap to the ferrule on the bag
CSP3373-06-00	CSP Tri Clover Clamp 4"	Used to connect the bag to the vessel and/or connect the blank cap to the ferrule on the bag
CSP3373-07-00	CSP Tri Clover Clamp 6"	Used to connect the bag to the vessel and/or connect the blank cap to the ferrule on the bag
CSP3373-08-00	CSP Tri Clover Dust Cover 3"	Put on the bag after manufacture to maintain the integrity of the bag
CSP3373-09-00	CSP Tri Clover Dust Cover 4"	Put on the bag after manufacture to maintain the integrity of the bag
CSP3373-10-00	CSP Tri Clover Dust Cover 6"	Put on the bag after manufacture to maintain the integrity of the bag
CSP3373-11-00	CSP Tri Clover Silicone Gasket 3"	Standard silicone gasket to fit BS4825-3 tri-clover ferrule
CSP3373-12-00	CSP Tri Clover Silicone Gasket 4"	Standard silicone gasket to fit BS4825-3 tri-clover ferrule
CSP3373-13-00	CSP Tri Clover Silicone Gasket 6"	Standard silicone gasket to fit BS4825-3 tri-clover ferrule